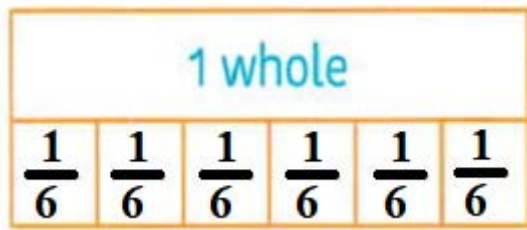


Topic: Fractions

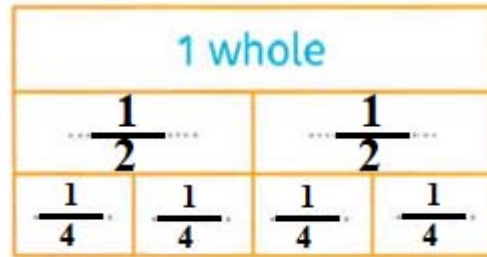
Object: Explore fractions further, including equivalent fractions, comparing fractions, and adding and subtracting fractions with like denominators.

\* Write the missing fraction:

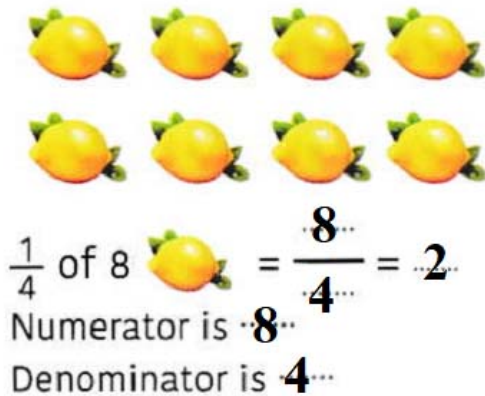
1)



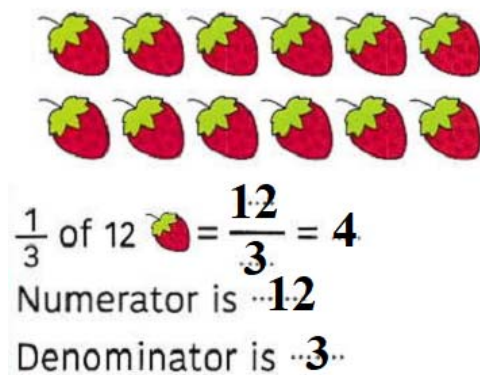
2)



3)



4)



\* Compare the following fractions: put the correct sign  $>$ ,  $=$ ,  $<$

5)  $\frac{1}{5} < \frac{1}{4}$

6)  $\frac{3}{3} = \frac{2}{2}$

7)  $\frac{1}{3} > \frac{1}{6}$

8)  $\frac{1}{8} > \frac{1}{12}$

9)  $\frac{2}{4} = \frac{1}{2}$

10)  $\frac{2}{7} < \frac{5}{6}$

\* Add and subtract :

11)  $\frac{2}{3} + \frac{1}{3} = \frac{3}{3} = 1$

11)  $\frac{4}{8} + \frac{2}{8} = \frac{6}{8}$

13)  $\frac{6}{10} - \frac{2}{10} = \frac{4}{10}$

14)  $\frac{2}{6} + \frac{3}{6} = \frac{5}{6}$

15)  $\frac{2}{4} - \frac{1}{4} = \frac{1}{4}$

16)  $\frac{11}{12} - \frac{5}{12} = \frac{6}{12}$